

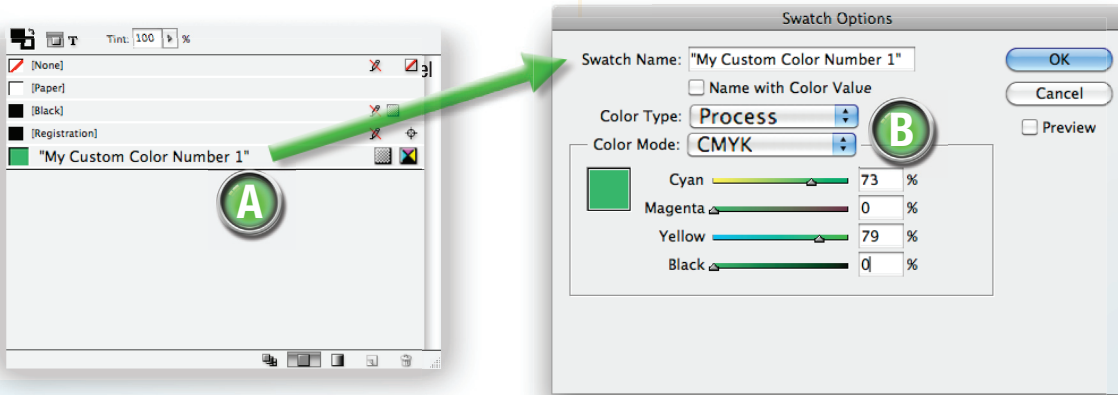
# InDesign CS3 & Newer How To Create A PDF

## STEP 1: Convert Custom Colors to CMYK

To create a Lightning Source<sup>®</sup> compliant PDF/X-1-a:2001 file, all custom colors must be converted to CMYK.

In the Menu Bar, click on “Window” and drop down to “Swatches”.

- A. In the “Swatches” panel, double-click on each Custom Color to access the “Swatch Options” window.
- B. Next to “Color Type:” choose “Process”, Next to “Color Mode:” choose “CMYK”

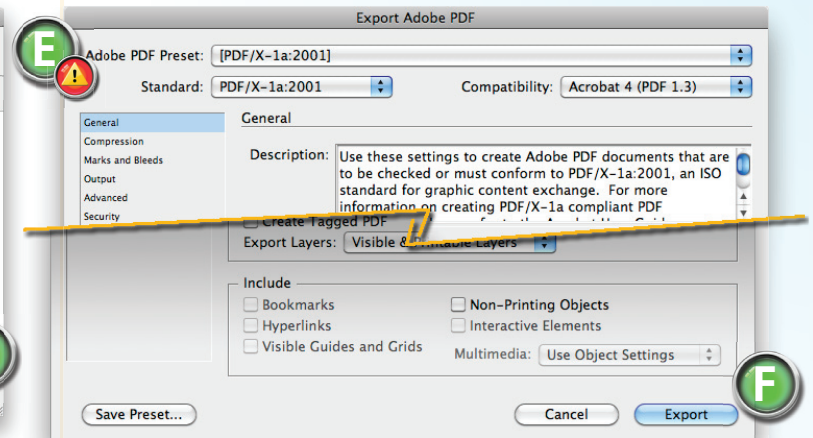
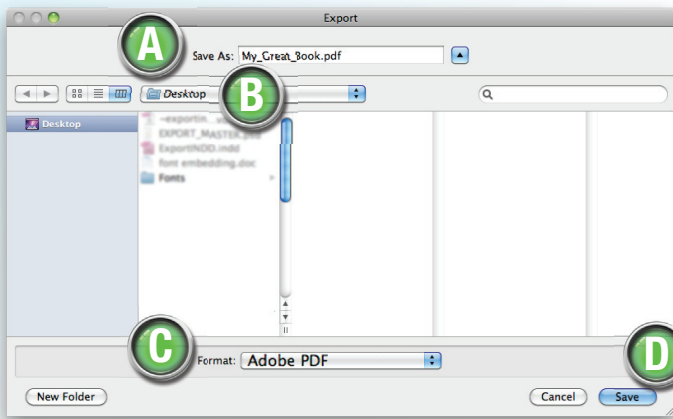


If the “Color Type:” or “Color Mode:” are anything other than the ones listed above, Lightning Source<sup>®</sup> may place the file on-hold, until a compliant file is submitted.

## STEP 2: Create a PDF that is PDF/X-1a:2001 compliant

In the Menu Bar, click on “File” and drop down to “Export”

- A. “Save As:” Name your file in this field
- B. Choose the destination for the PDF
- C. Next to “Format:” choose “Adobe PDF”
- D. Click “Save”
- E. Next to “Adobe PDF Preset:” choose the Default Setting of “[PDF/X-1a:2001]”  
*(Please, do not modify any of the Default settings)*
- F. Click “Export” and a PDF will be created in the designated folder.



If any of the Default settings are altered, the field to the right of “Adobe PDF Preset:” will read, “[PDF/X-1a:2001] (modified)”. The subsequent PDF will not be PDF/X-1a:2001 compliant and may be placed on-hold until a compliant file is provided.

## STEP 3: Review your PDF file for accuracy

To verify that your PDF is compliant with LSI standards [CLICK HERE!](#)